

VERTICAL DOORS, INC.

VerticalDoors.com

542 3rd St. Lake Elsinore, CA 92530
Tel: 951.245.8669 Fax 951.245.5481



BMW Z4 09-16 Vertical Door Kit

U.S. PATENTS

#6,808,223; #6,845,547; #7,140,075; #7,059,655

PATENTS AGGRESSIVELY ENFORCED!

**PLEASE CAREFULLY READ ALL INSTRUCTIONS BEFORE
ATTEMPTING TO INSTALL THIS PRODUCT.**

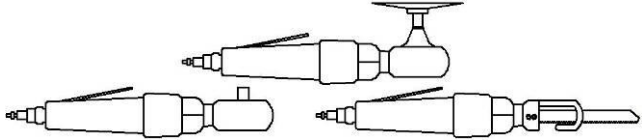
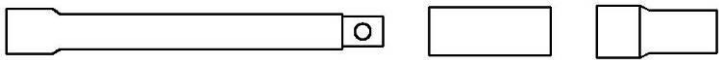
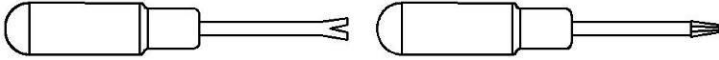


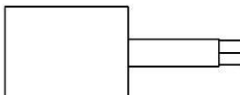

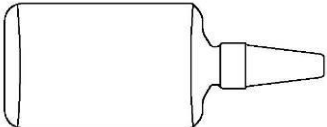
FOR QUESTIONS PLEASE

CALL (951) 245-8669

THIS KIT INCLUDES:

➤ 6 M8x1.25 BOLTS WITH WASHERS (DOOR)	➤ 2 LONG SHOCKS
➤ 4 M12x1.75 BOLTS WITH WASHERS (BODY)	➤ 2 SHOULDER BOLTS
➤ RIGHT AND LEFT HINGE ASSEMBLY	➤ 2 PINS

TOOLS REQUIRED FOR INSTALLATION:

	➤ AIR RACHET, GRINDER AND CUTTER.
	➤ 7MM, 8MM, 10MM, 11MM, 13MM, SOCKETS AND EXTENSION.
	➤ FORK AND PHILLIP'S SCREW DRIVERS
	➤ SPACERS FOR THE DOOR GAP.
	➤ 3/16 ALLEN WRENCH
	➤ 1/4 & T15 TORX BIT
	➤ 9/16 WRENCH
	➤ LOCKTITE RED

OTHER TOOLS MAY BE NEEDED DEPENDING ON YOUR VEHICLE.

(Note: The pictures in the manual are for reference only they may not match your vehicle.)

Disconnect the battery.

Open the door and remove 1 bolt securing the door catch.



Remove the front fender:

Remove the fasteners holding the wheel well liner to the fender, this will release the liner and it will allow you to access the bolts securing the fender.



You will need to partially remove the side skirt.
Remove the retainers securing it underneath and pull on it to release (use plastic pry tool to release tabs)



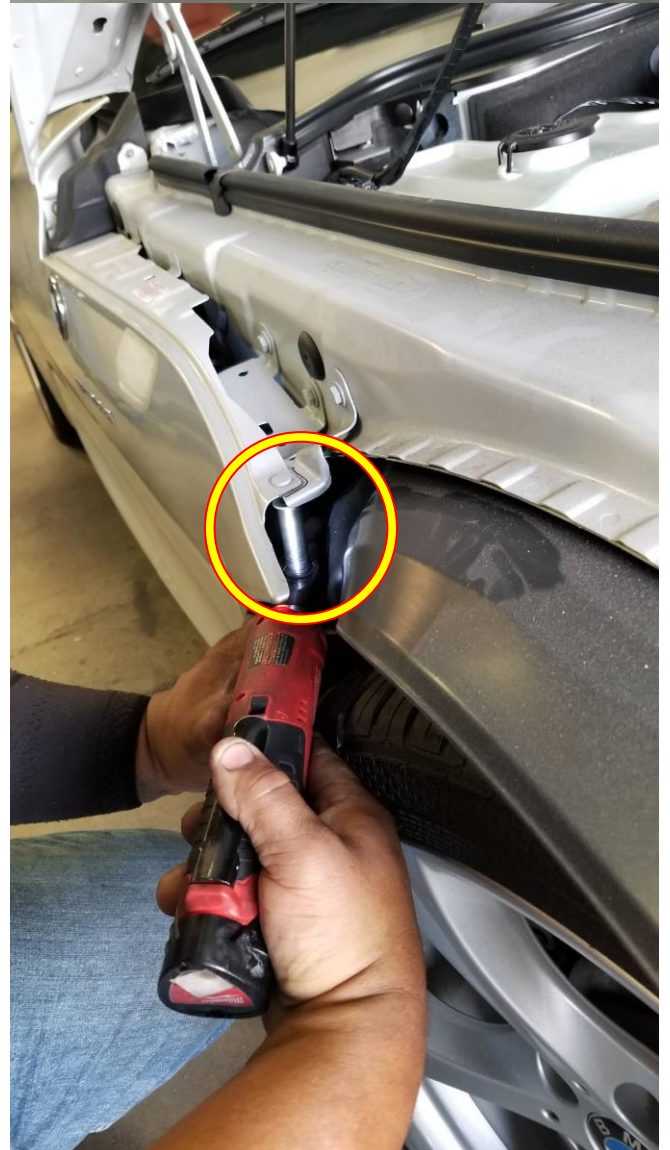
You will need to remove the side skirt bracket.



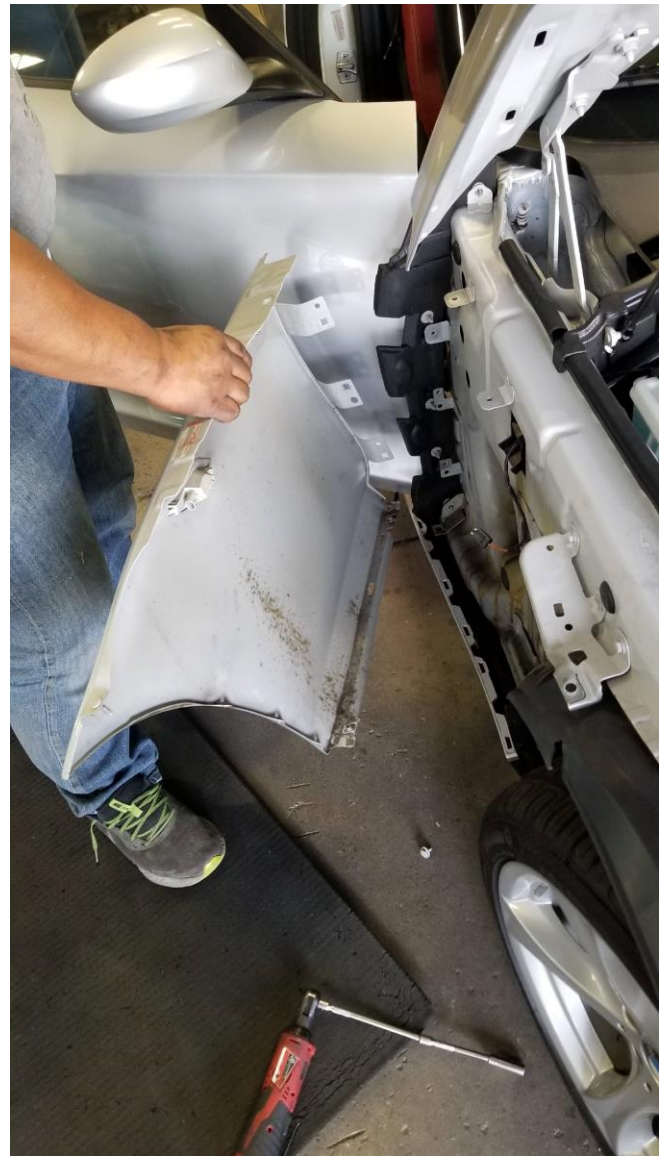
Before removing the fender make sure to mark its location to help you during re-installation.



You will need to push on the wheel well liner to get access to the nut at the front of the fender.



When removing the fender carefully remove the plug on the side marker and the remaining bolt from the top, pull on the fender to get access to the bolt inside the fender by the door.



Once you remove the fender you will need to remove the 2 top fender brackets from the apron.



Before removing the factory door hinges, make sure to mark the factory location of the door.



Make sure the
Measure and Mark
the distance from the
front edge of the
door to the body,
next to the top and
bottom door hinge.

See photos at the
right.



Unplug the factory wire harness and push the apron wire harness inside the apron for now.



After carefully marking the factory location of the door, you will need to remove it.

You will need to remove the factory hinges. Use a "T-55 Torx" to remove the bolt from the top and bottom hinge.



Once the factory hinges have been removed make sure the apron is free from any debris in preparation for the VDI installation.



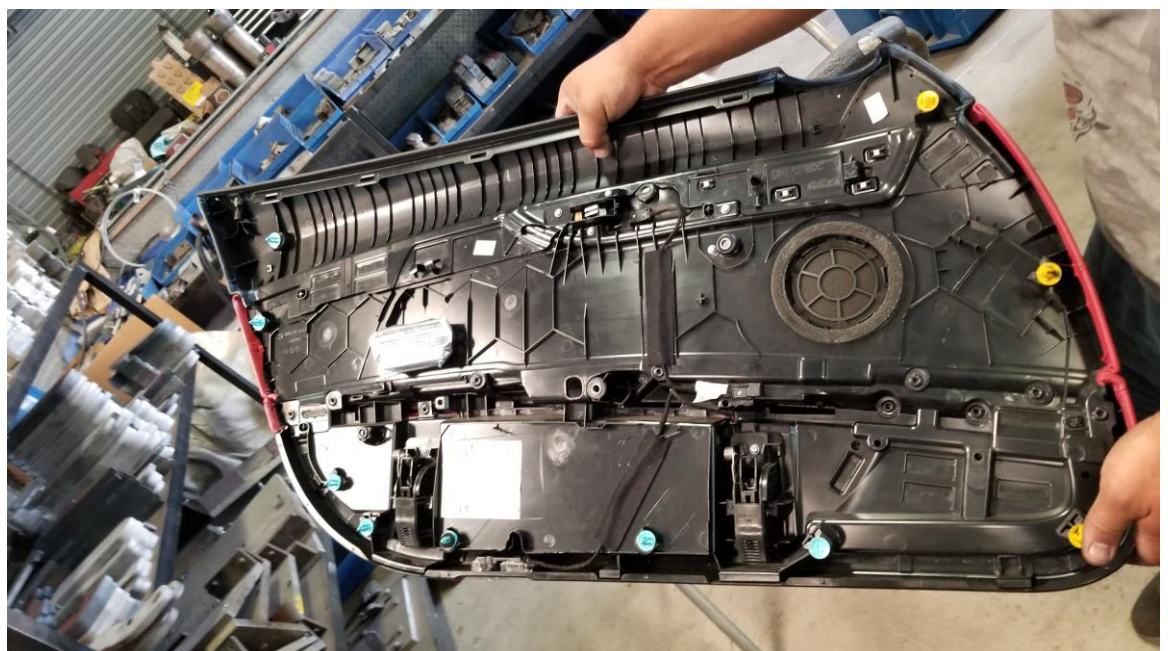
Note: You will have to modify one of the top fender hold-downs as shown, so that it clears the new VDI hinge.



Install the door back on the car.
IMPORTANT

Use the marks you made previously to put the door back to the factory location.

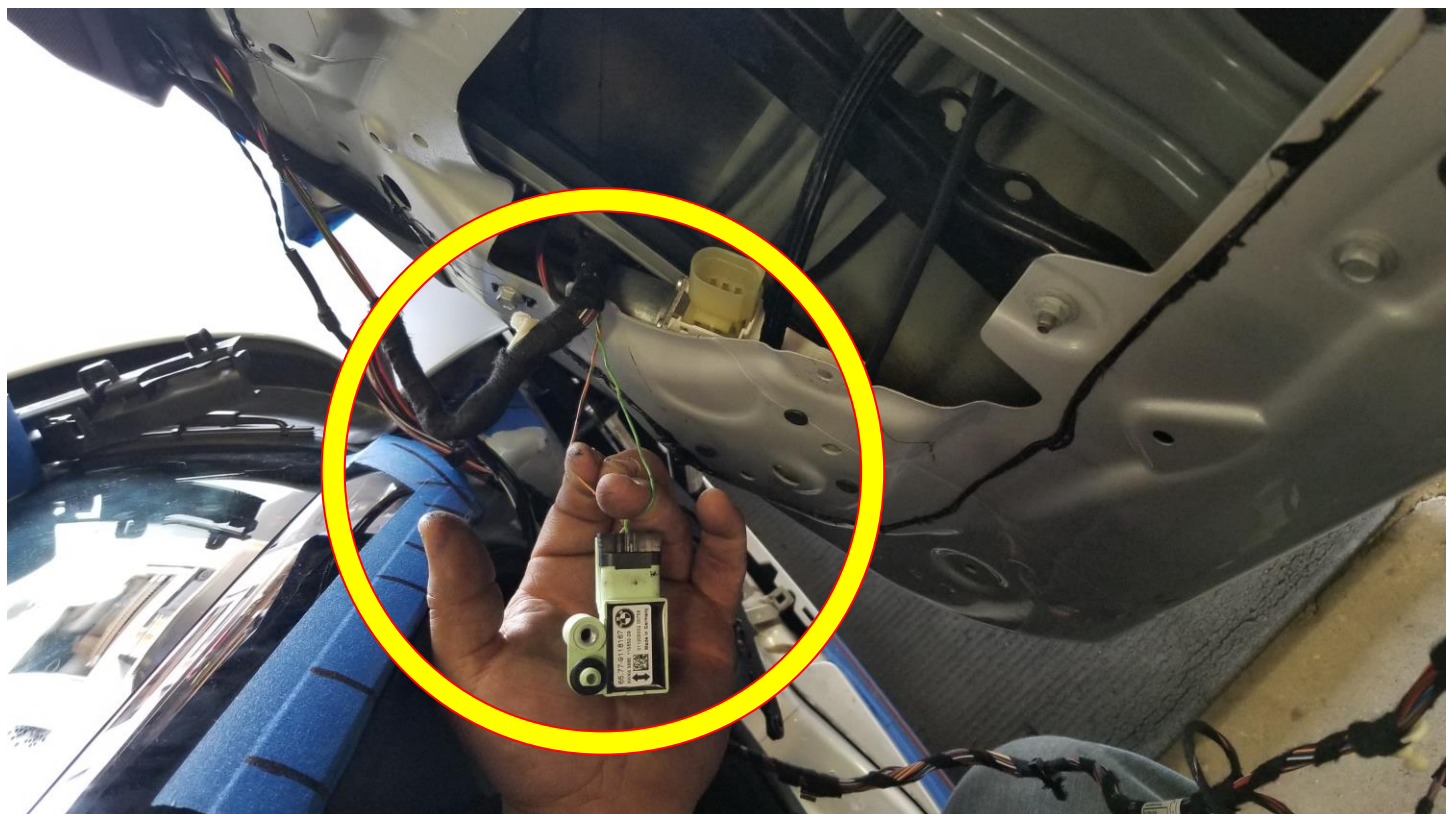
You will need extra wire to allow the door to be raised up.
Remove the door panel to get access to the wires inside the door.



After removing the door panel pull back on the plastic over. Remove the speaker, this will allow you to remove the door catch. You will need to remove the censor at the top front of the door and elongate its wire.



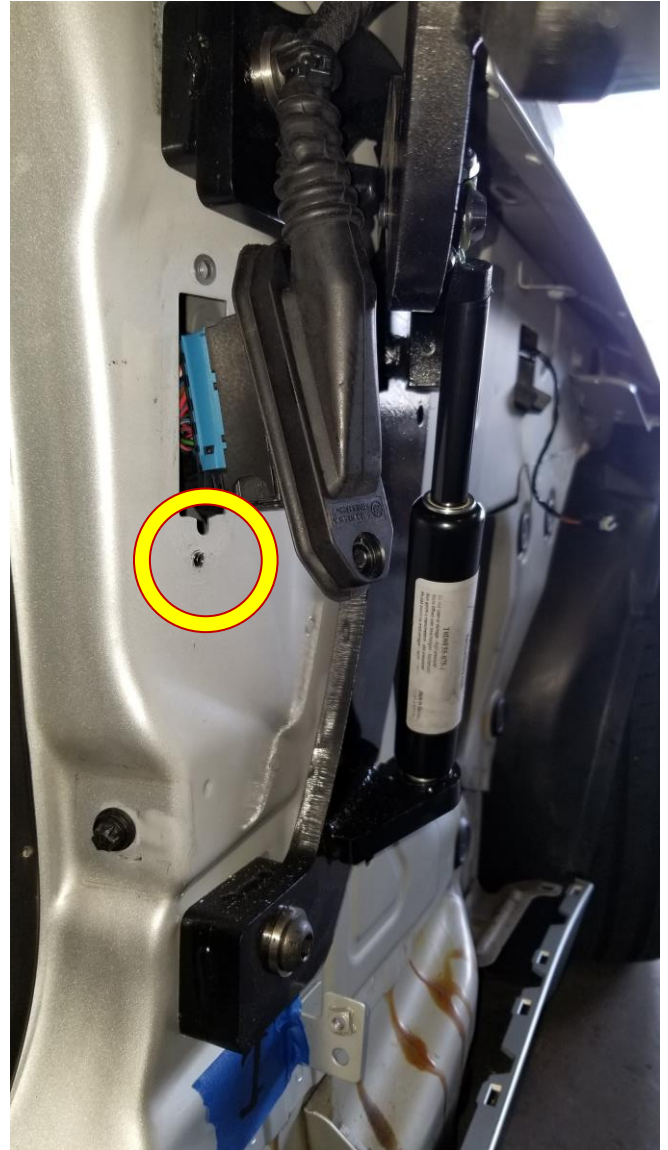
Cut the two censor wires and use the 2 enclosed wires to elongate the cables to gain the necessary wire slack to raise the door up.



Once you have elongated the wires secure them back on the door and pull the extra wire slack through the front of the door.

Cut the factory wire book in half.
(DO NOT CUT THE WIRES)
And flip the wire harness upside
down.

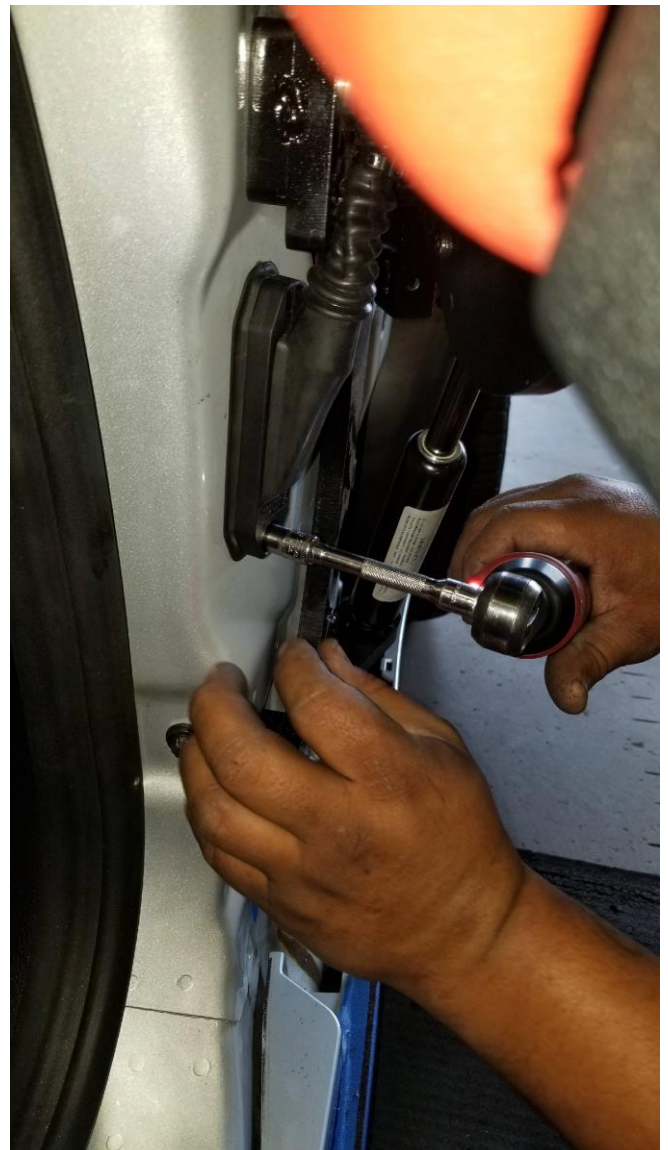
Drill and tap a new hole just below
the wire harness hole to secure the
factory wire harness to the apron.



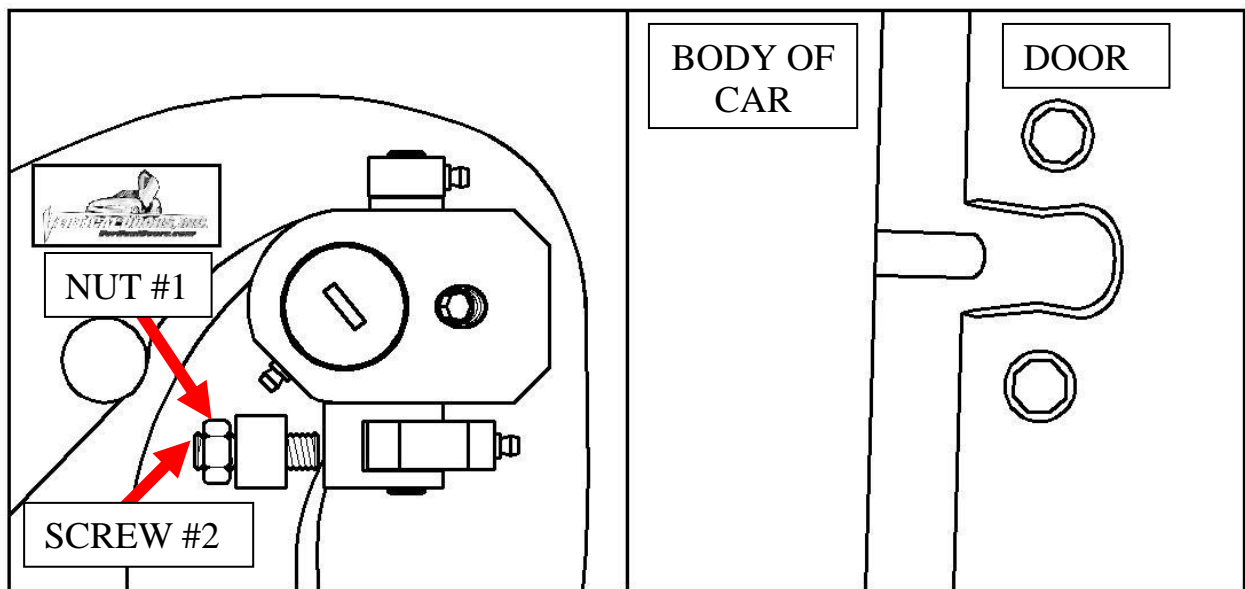
Secure the wire harness to the
apron in the upside-down position.

We use harness tape to cover and
protect the factory wires, but
frictionless tape works well also.

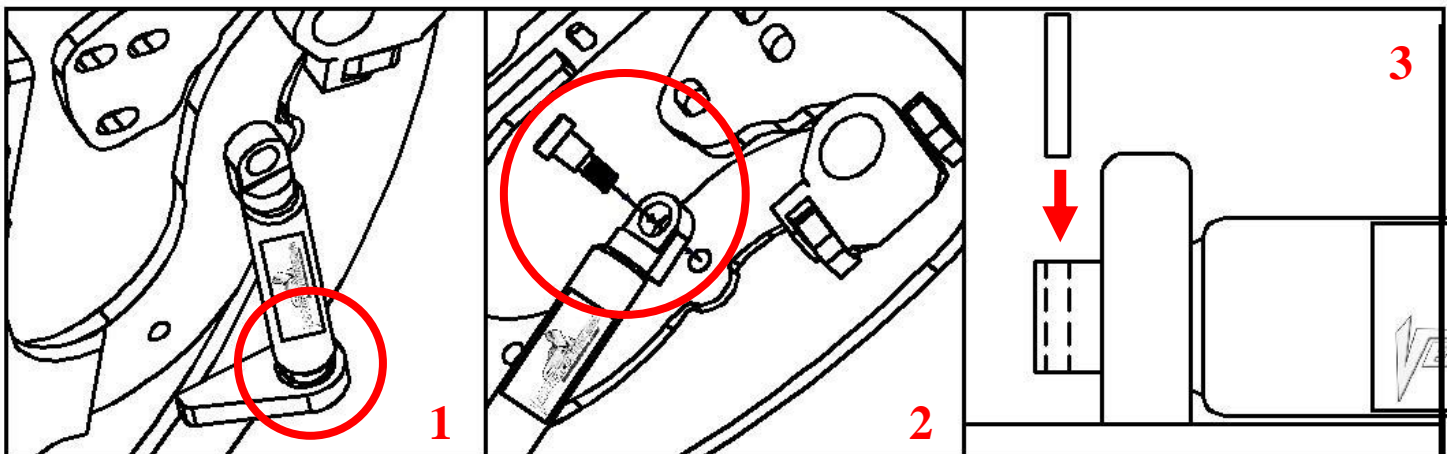
Use a small zip tie to secure the 2
halves to the protected wires, once
you have figure out how much slack
you need.



Once hinge is locked in place, break nut #1 then turn Allen set screw #2 on fig until it hits the block then open the door and continue to adjust until the door matches with the striker, open and close door making sure it closes like factory.

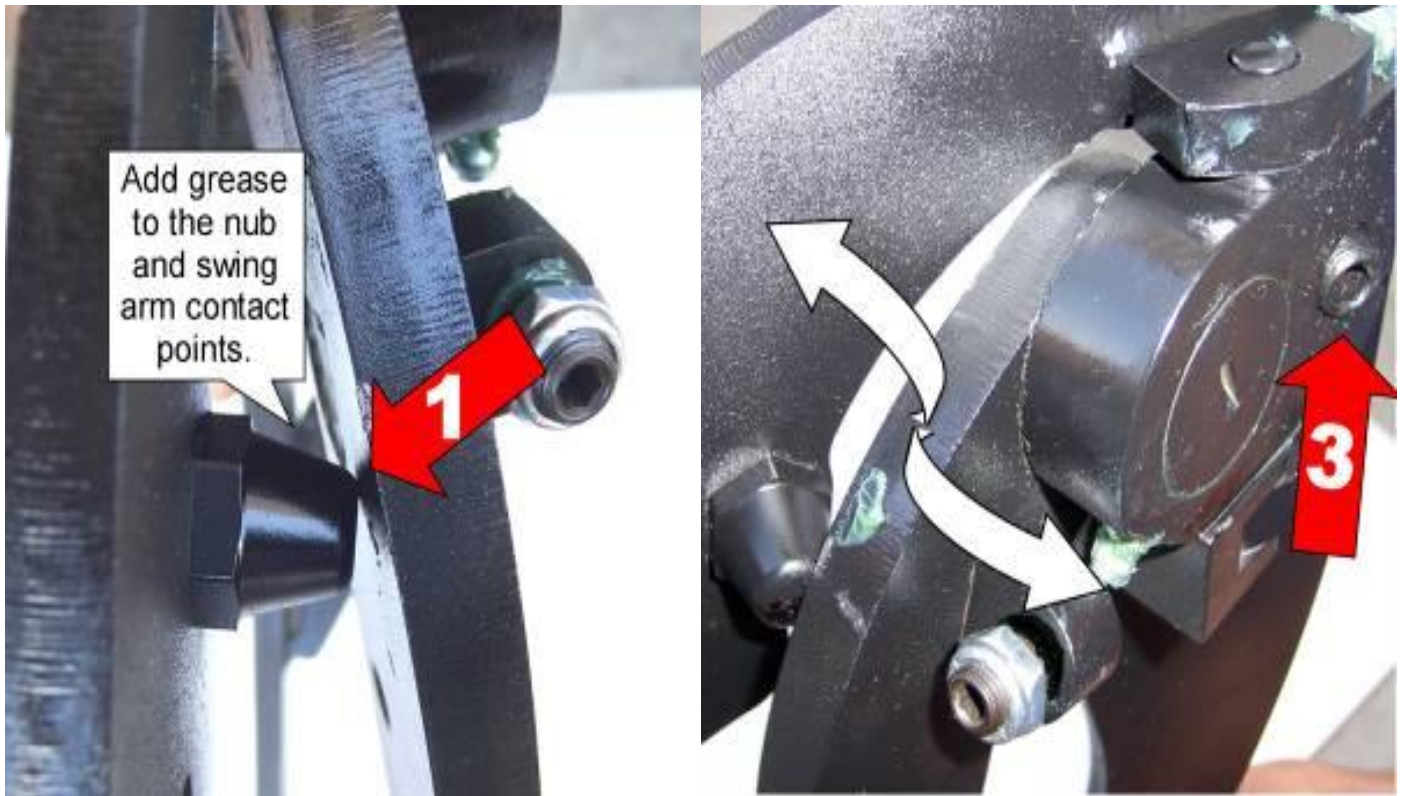


*Hint**(leave #1 nut loose until shock is installed Allen set screw will have to be re-adjusted after shock is installed.)
Install the shock.

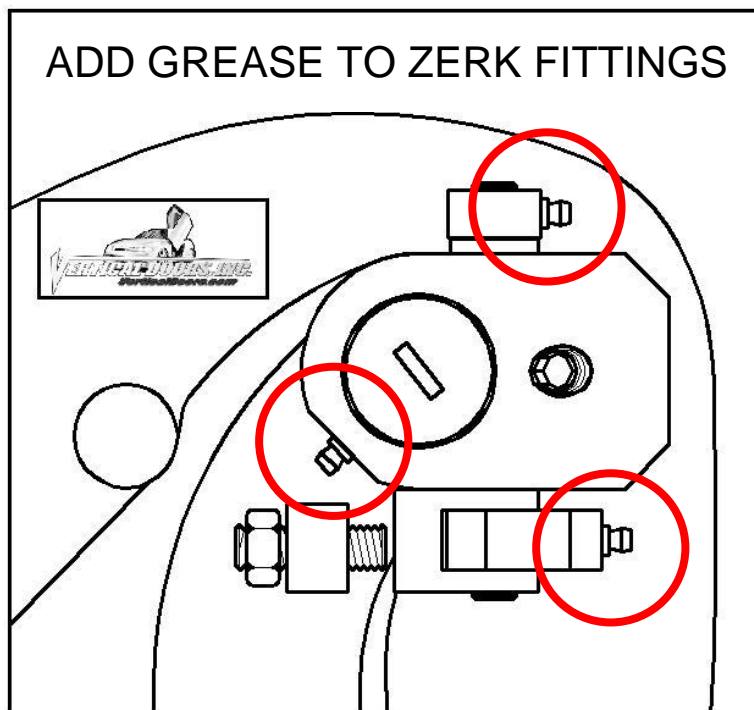


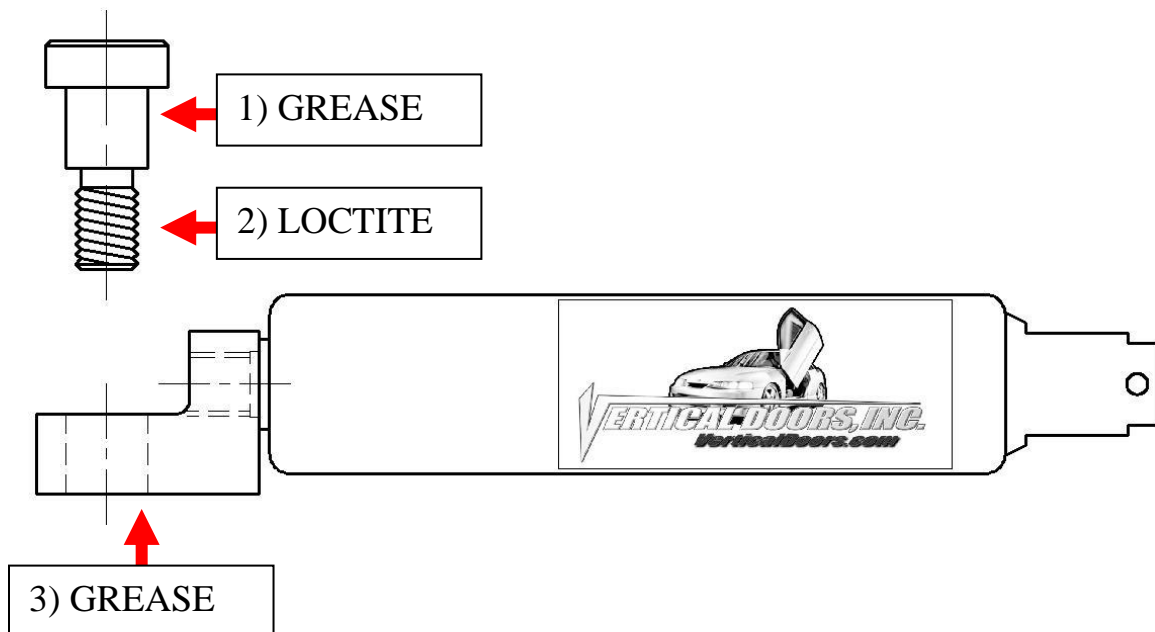
*Hint** (You will need a helper to raise the door). (Slip the spherical rod mount into the spherical ball bearing (1). Using a 1/4 Allen wrench, tighten the screw into the swing arm (2). After the shock is installed secure it by installing the pin in the bottom shock end (3).

After shock is installed re-install door panel and lift the door. Adjust door opening screw #3 clockwise until distance between nub and swing arm is enough so that the swing arm moves up and down freely.



Hint (Fine tune the Allen set screw (#2) to realigned striker with door. After the door is aligned, test door by opening and closing, lifting and lowering door several times.*



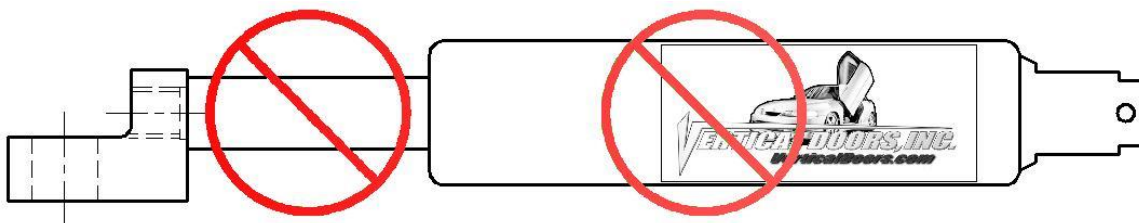


***IMPORTANT STEP: DO NOT SKIP THIS STEP. THIS STEP IS CRUCIAL IN YOUR INSTALLATION PROCESS, IF THIS STEP IS NOT COMPLETED WHEN INSTALLING THE VERTICAL DOOR KIT; ALL WARRANTIES ARE VOIDED, AND MAY CAUSE FUTURE PROBLEMS WITH YOUR VERTICAL DOOR SYSTEM.**

1ST, make sure you put grease on the body of shoulder bolt where the arrow is pointing.

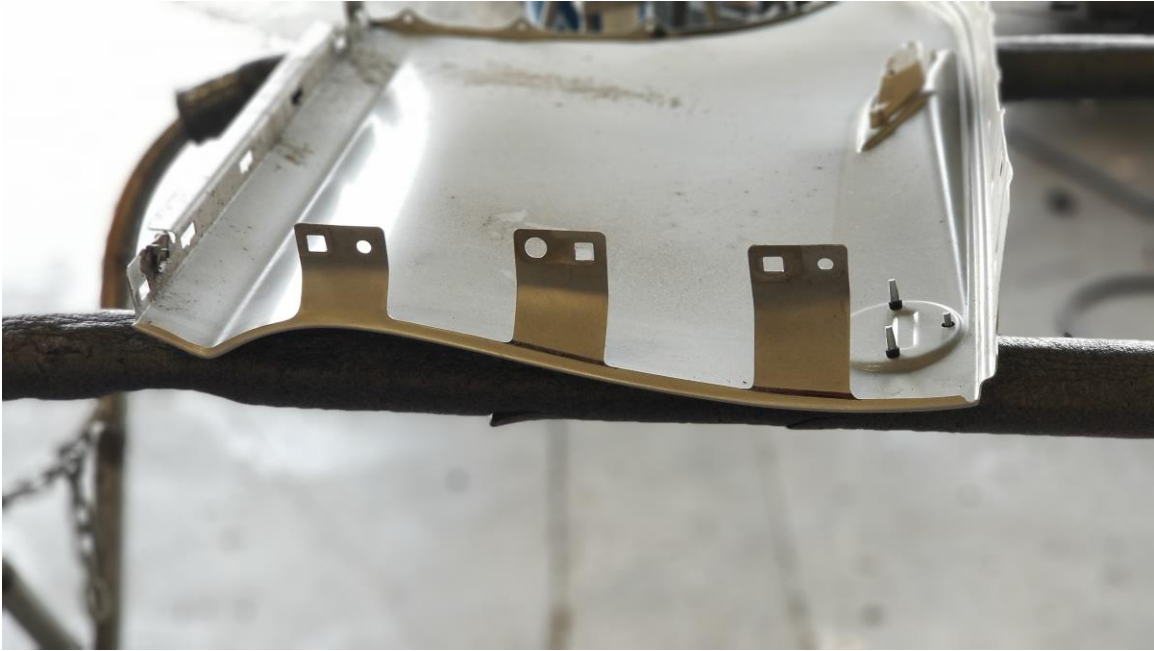
2ND, make sure you put red Loctite, where the arrow is pointing, on thread of shoulder bolt.

3RD, make sure you put grease on the bottom side of the shock end.



WARNING! THE USE OF ANY TYPE PLYERS, PAINT OR FOREING MATERIALS ON THE SHOCK'S BODY OR SHAFT WILL VOID THE WARRANTY.

You will need to modify the fender to allow the hinge to move freely.
Before Fender Trim:



Remove insulation.

Use a power cutter and grinder to cut and take any sharp edges off. Touch it up with paint to give it a finish look.



You will need to modify the top of the fender as shown



Replace the fender by reversing the steps.

For the other side just follow the same steps.

Hint(Make sure the electrical wires don't get pinched enough to damage wires)*

Note: Do not install fender until the adjustment of the door is accurate, and the set screw is tightly secure. Also make sure everything is tight, adjustment is set and everything is Loctite.

Thank you for your purchase of the BMW Z4



NOTE:

Vertical Doors Inc. assumes no responsibility for any damages caused by improper installation.